

Root System Architecture (RSA) of Prairie Grasses Under Acidic Soil Conditions

Prepared for: Dr. Emmanuel Dzantor,
Tennessee State University,

May 2011

Three Types of Prairie Grasses Were Grown in Number 5 Pots

- Switchgrass (*Panicum virgatum* L.)
- Eastern Gamagrass (*Tripsacum dactyloides* (L.) L.)
- Big Bluestem (*Andropogon gerardii* Vitman)

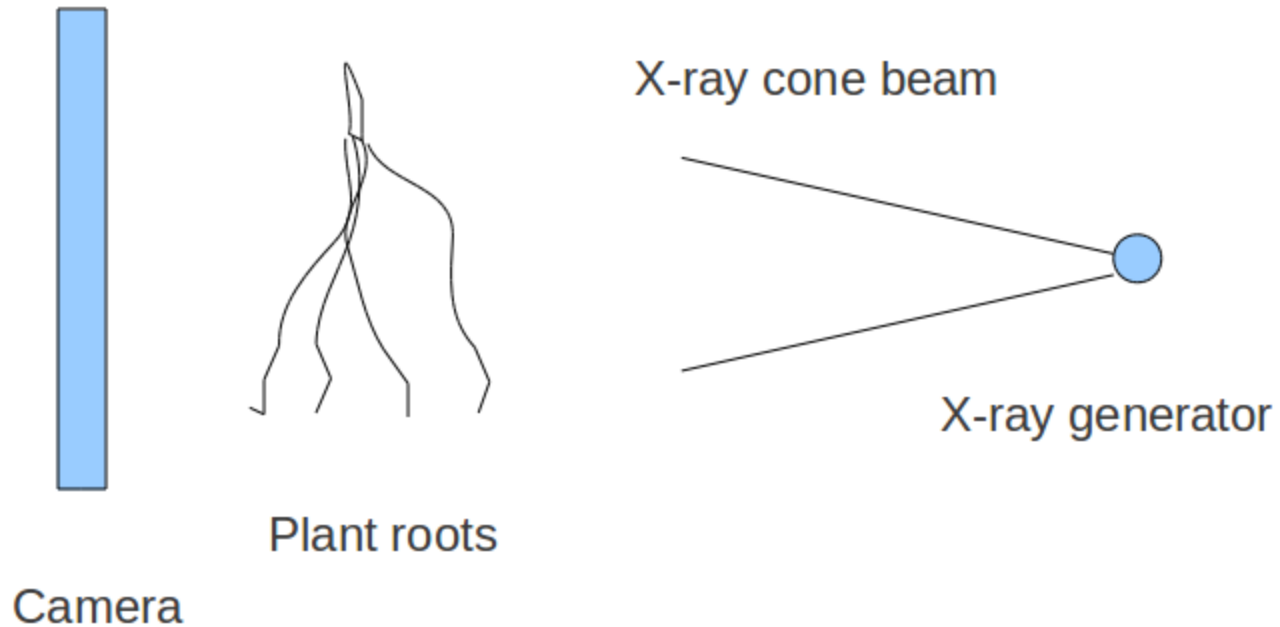
Experimental Conditions

- Four seeds of each species were planted in each pot in TSU greenhouses.
- Soil pH for each pot was maintained at one of three acidity levels: 4.5pH, 5.5pH and 6.5pH.
- Plants were grown under same greenhouse conditions for over nine months.

Experimental Conditions (cont)

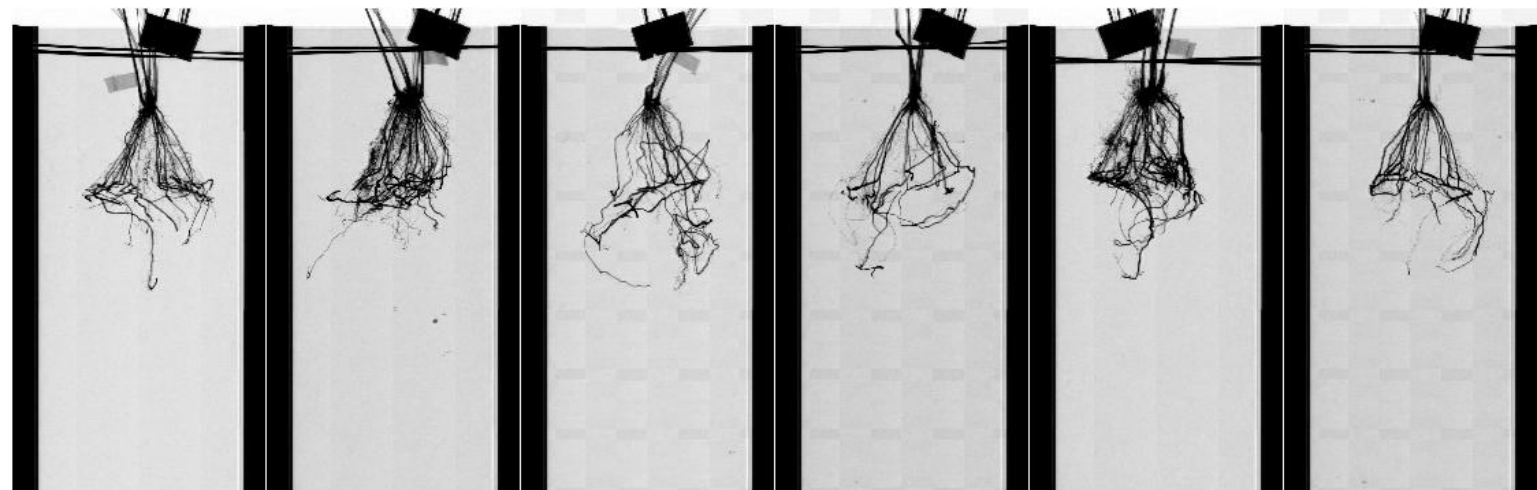
- Plants were extracted from pots, root systems were manually separated, soil was washed off with gentle water spray, individual roots were wrapped in moist towels and placed in sealed plastic bags, and shipped for overnight delivery to Phenotype Screening Corporation.
- Roots were left sealed until just prior to imaging. Roots were X-ray imaged over a period of 15 minutes each.
- There were six replicates for each treatment.

Basic Imaging Concept

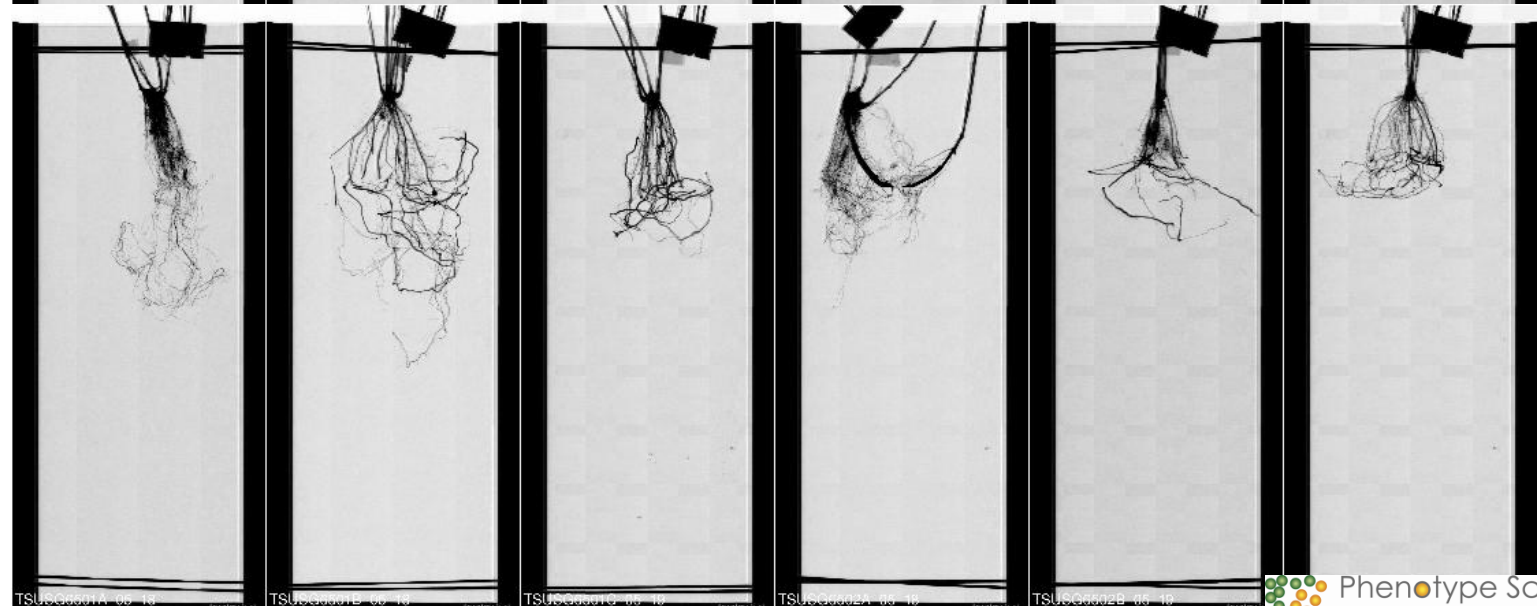


Switchgrass Root System X-ray Images

4.5 pH



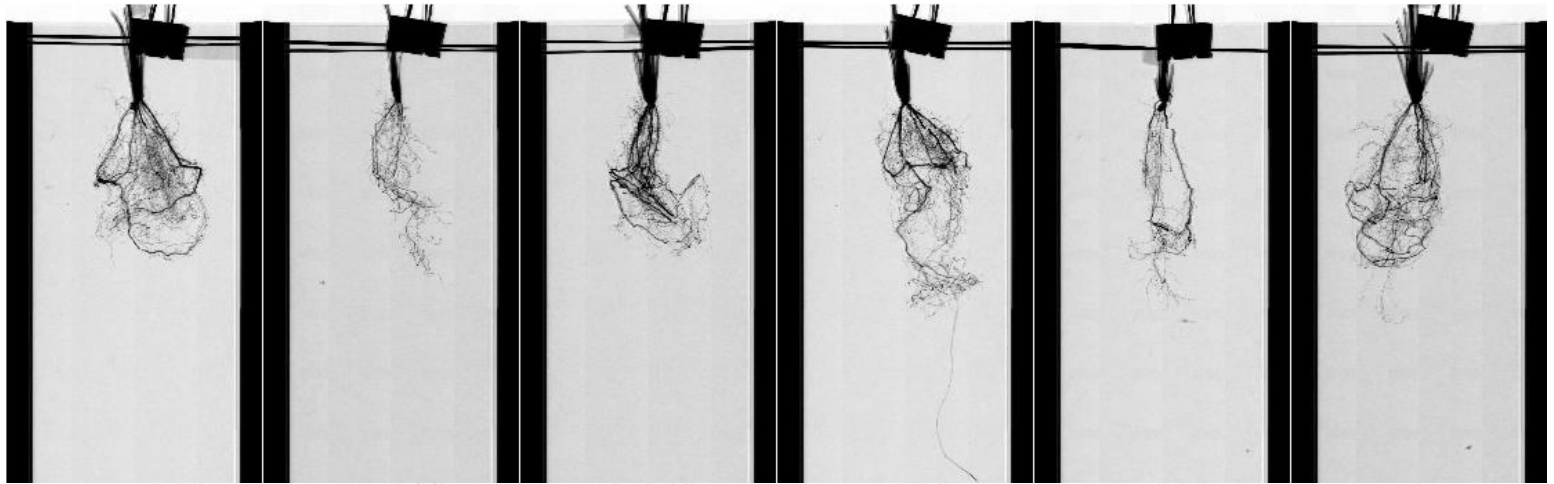
6.5 pH



TSUG000019 00 10 TSUG000019 00 10 TSUG000019 00 10 TSUG000024 00 10 TSUG000028 00 10

Gamagrass Root System X-ray Images

4.5 pH

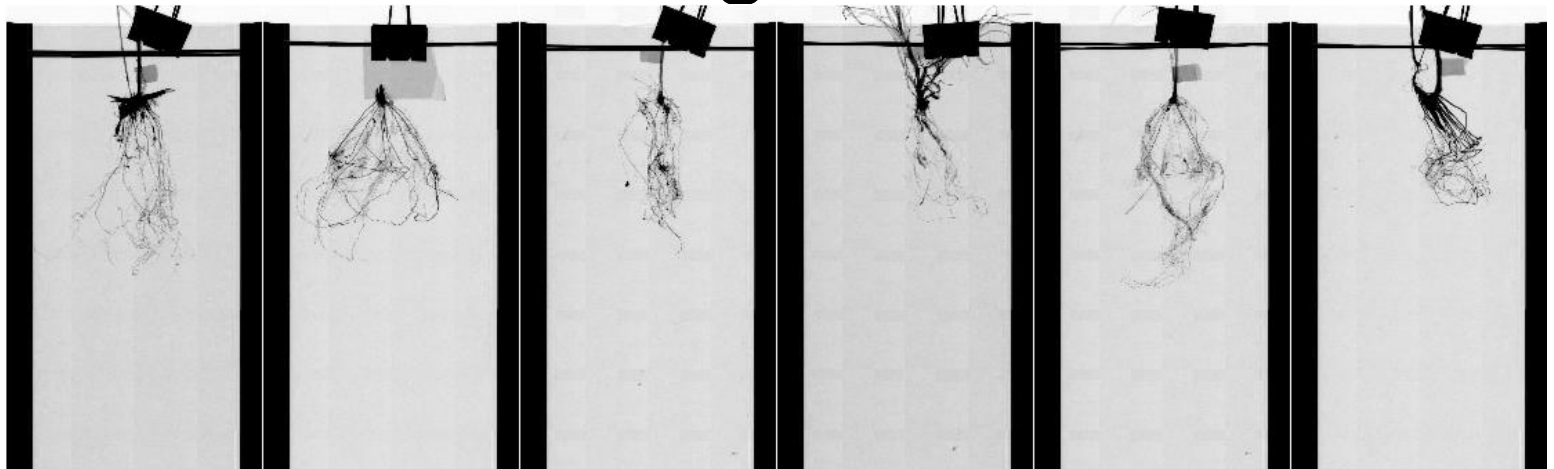


6.5 pH

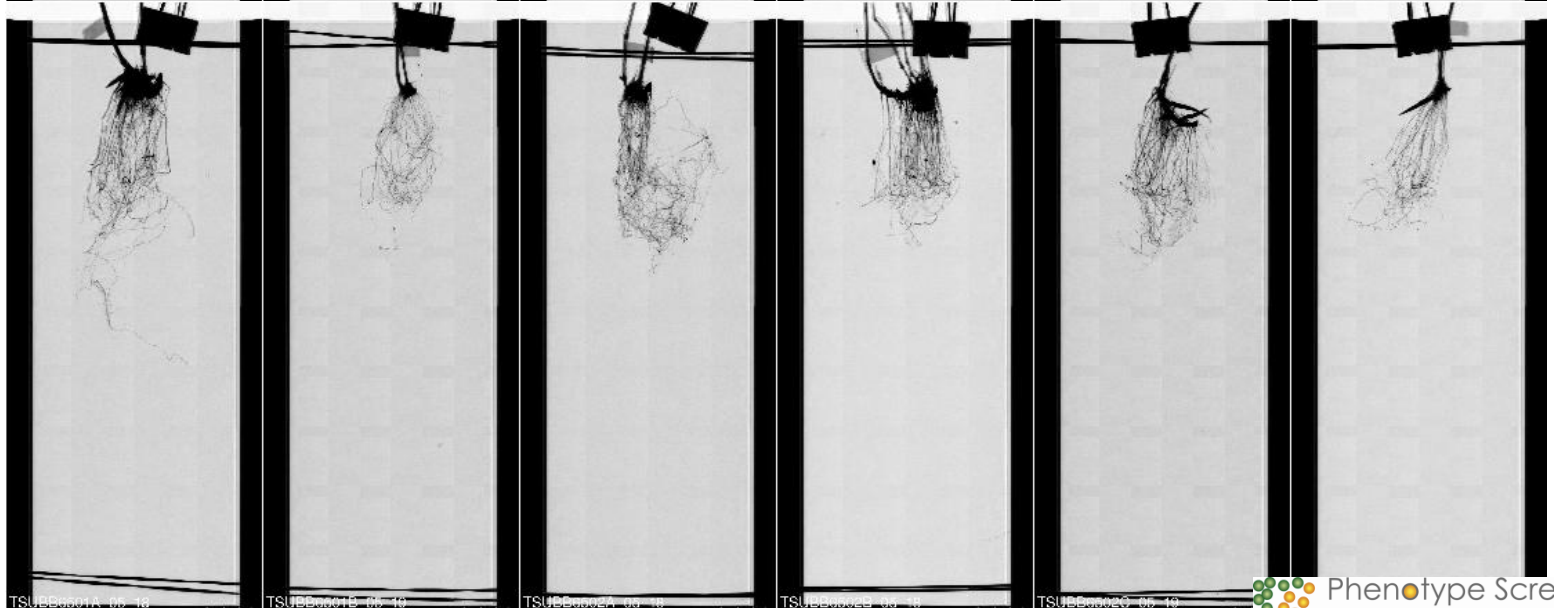


Big Bluestem Root System X-ray Images

4.5 pH



6.5 pH



TSUB00001A_00_10

TSUB00001B_00_10

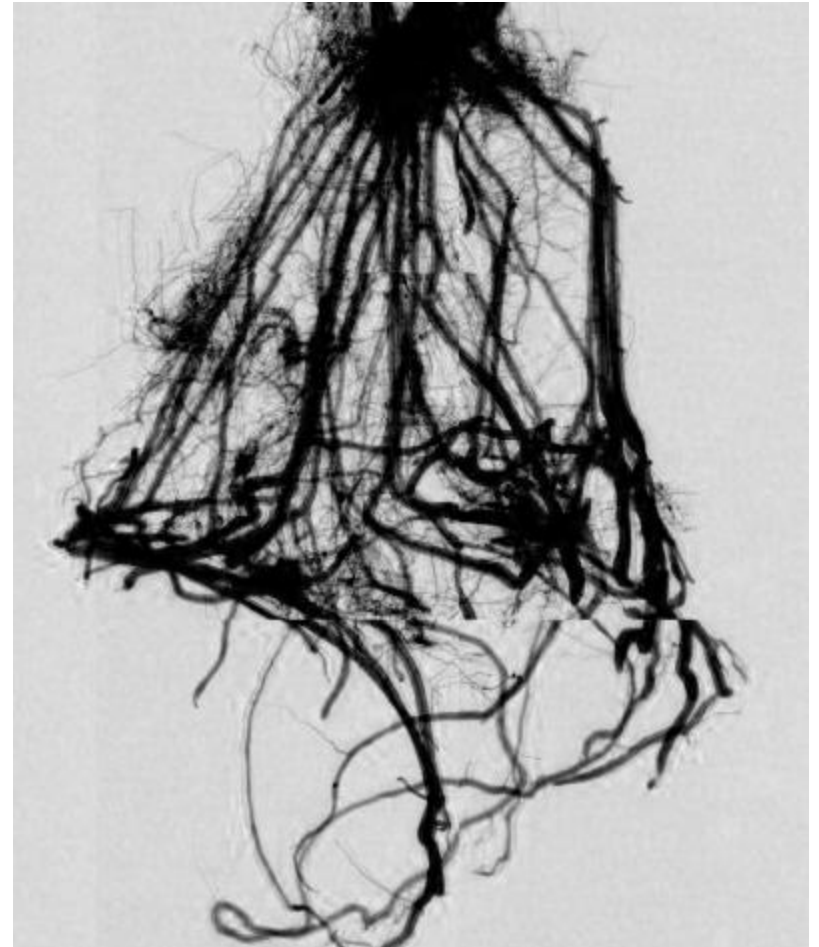
TSUB00001C_00_10

TSUB00001D_00_10

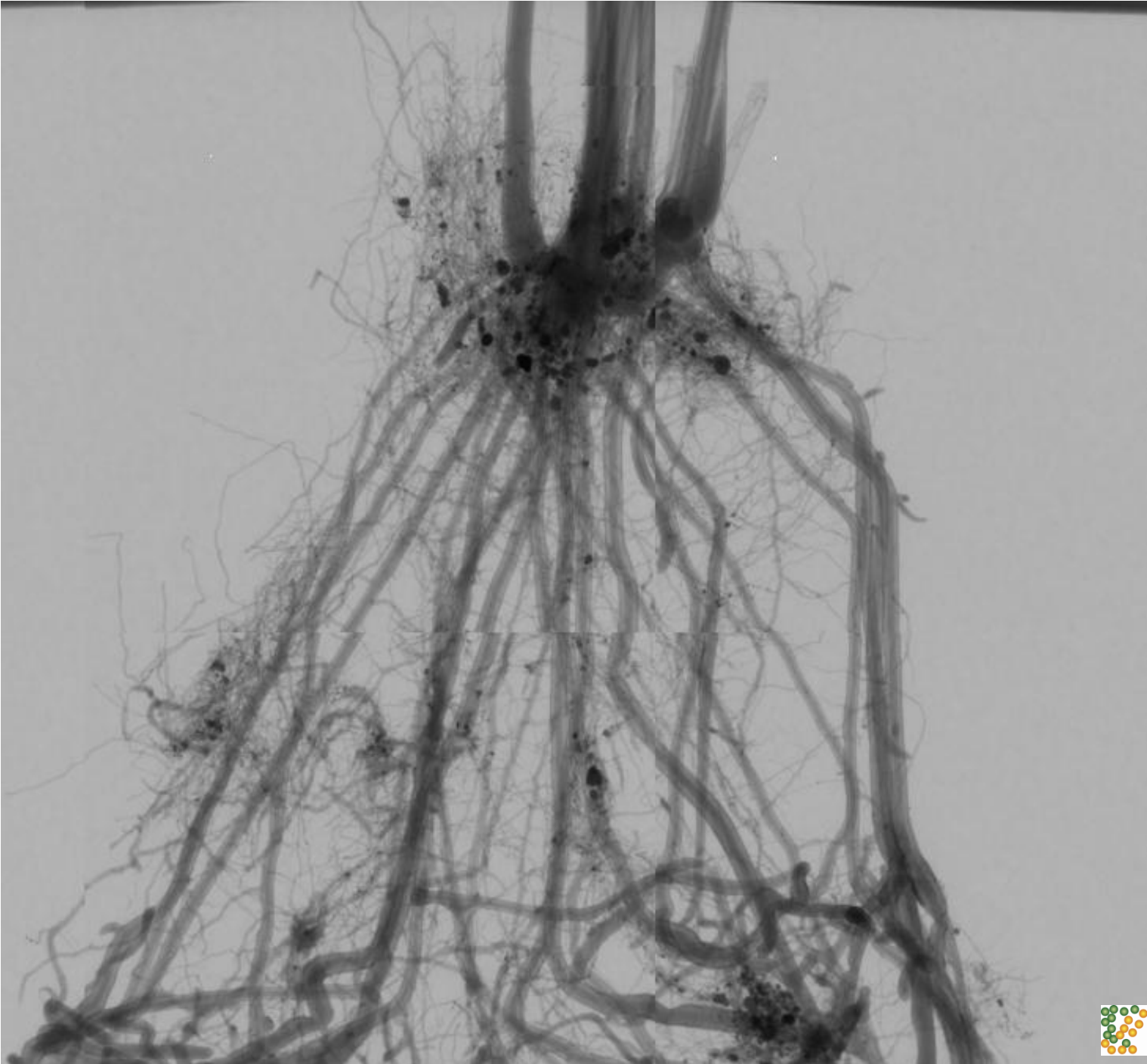
TSUB00001E_00_10



Stereo and Mono Images Were Generated of Each Plant



Switchgrass



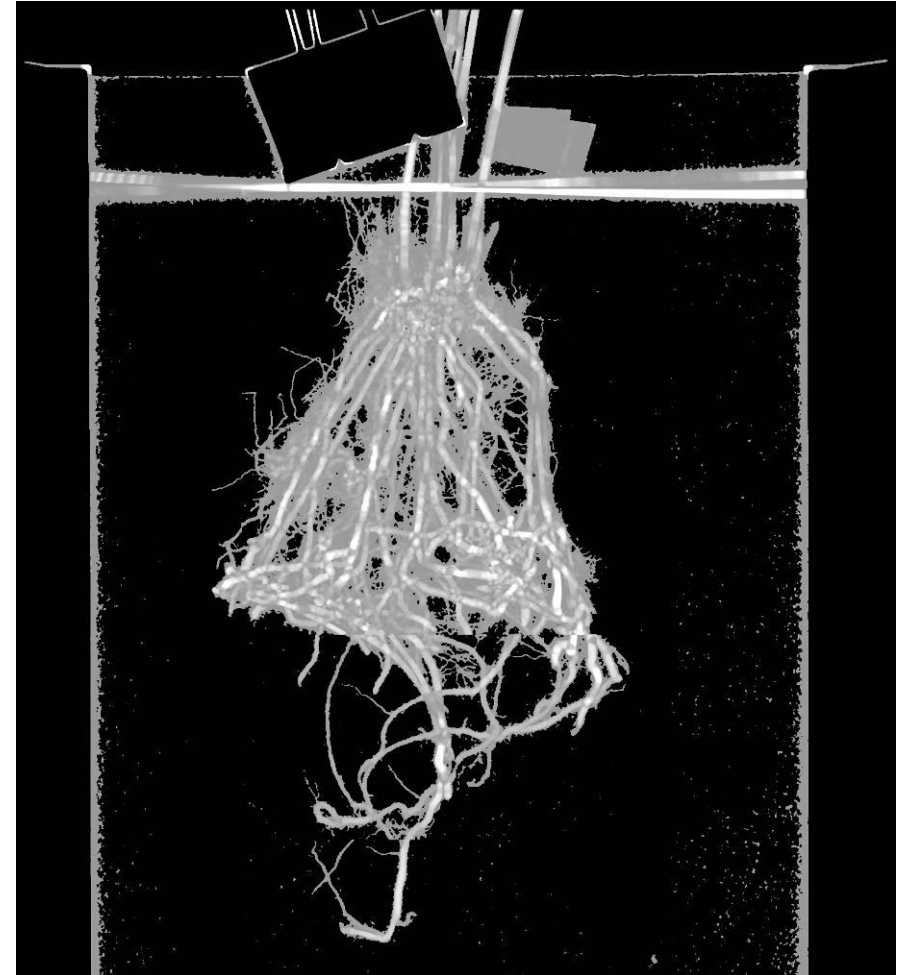
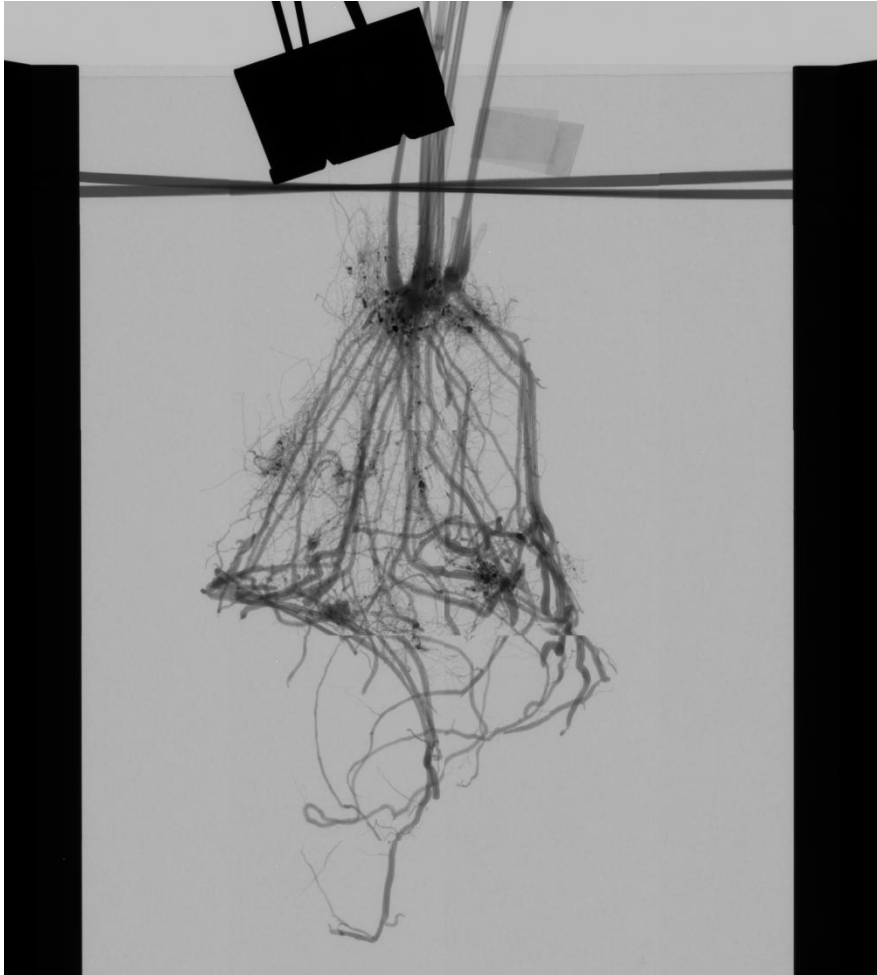
Very fine structure of RSA is captured in each plant root image.

Switchgrass



Phenotype Screening
CORPORATION
enabling discovery

Sophisticated Processing Is Applied to Enhance Features of Interest



Switchgrass

Image Analysis Techniques Were Used to Characterize the RSA by Root Size Classes



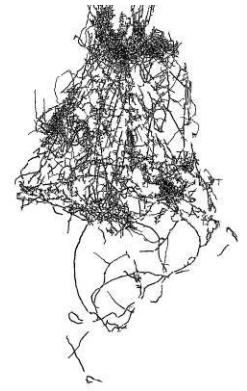
Original Image



Coarse Roots
< 2.9 mm



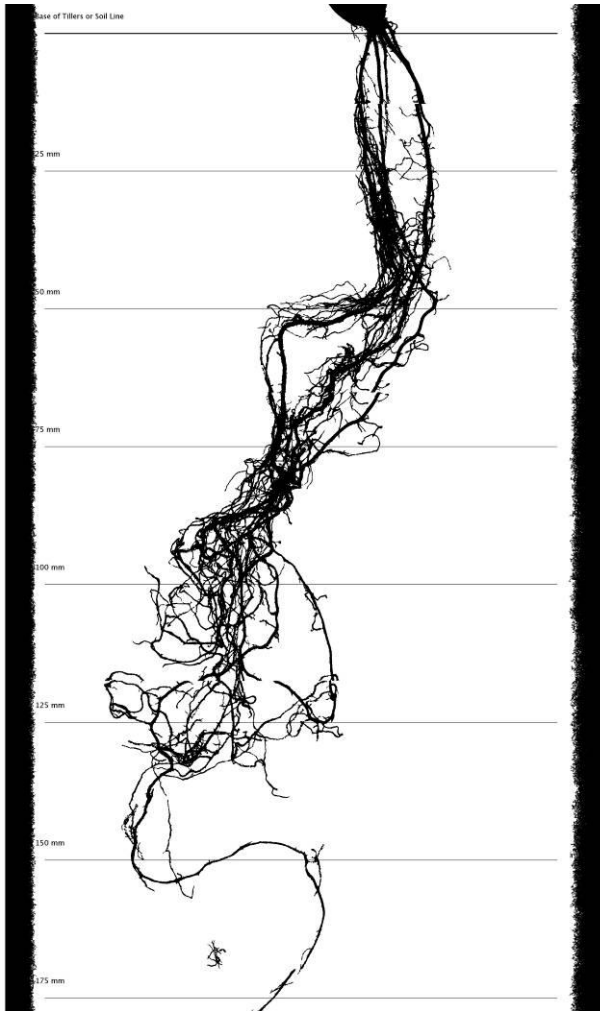
Medium Roots
725u to 2.5 mm



Fine Roots
181u to 620u

Global RSA traits were independently determined at each root class size.

Transect Analysis was Used to Assess RSA Distribution by Depth



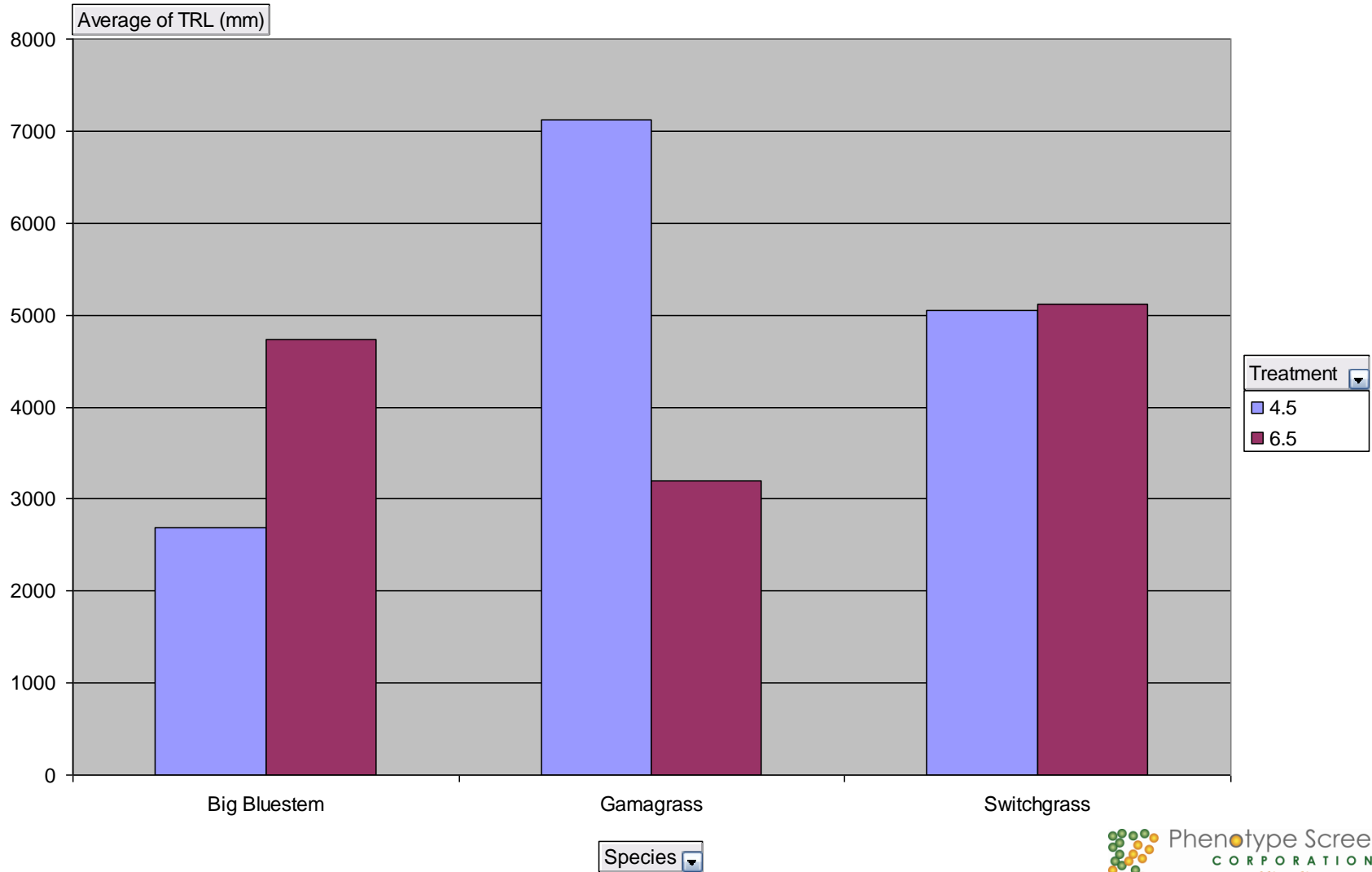
The image is analyzed at specific depths. The number of roots crossing each transect is counted and the position and diameter of each root at the crossing is determined.

The square of the root diameter is considered proportional to mass. The sum of all of the areas of roots gives a value proportional to total mass at that depth.

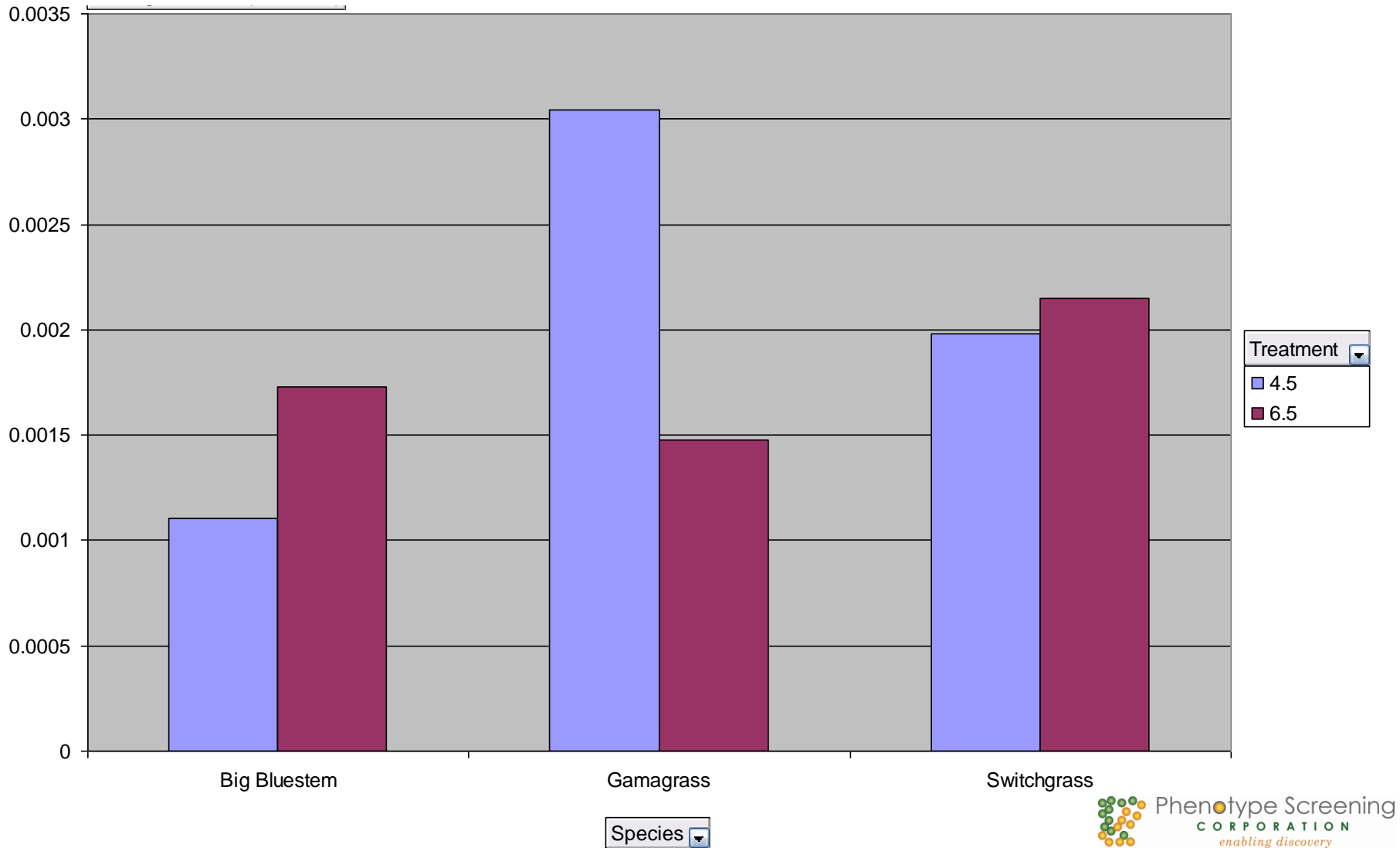
The width of the root system is also determined at each transect depth. We can then determine the “count density” and the “mass density” at each depth.

Global characteristics such as “projected area,” “total-root-length,” “total-root-length-density” are also determined for each plant.

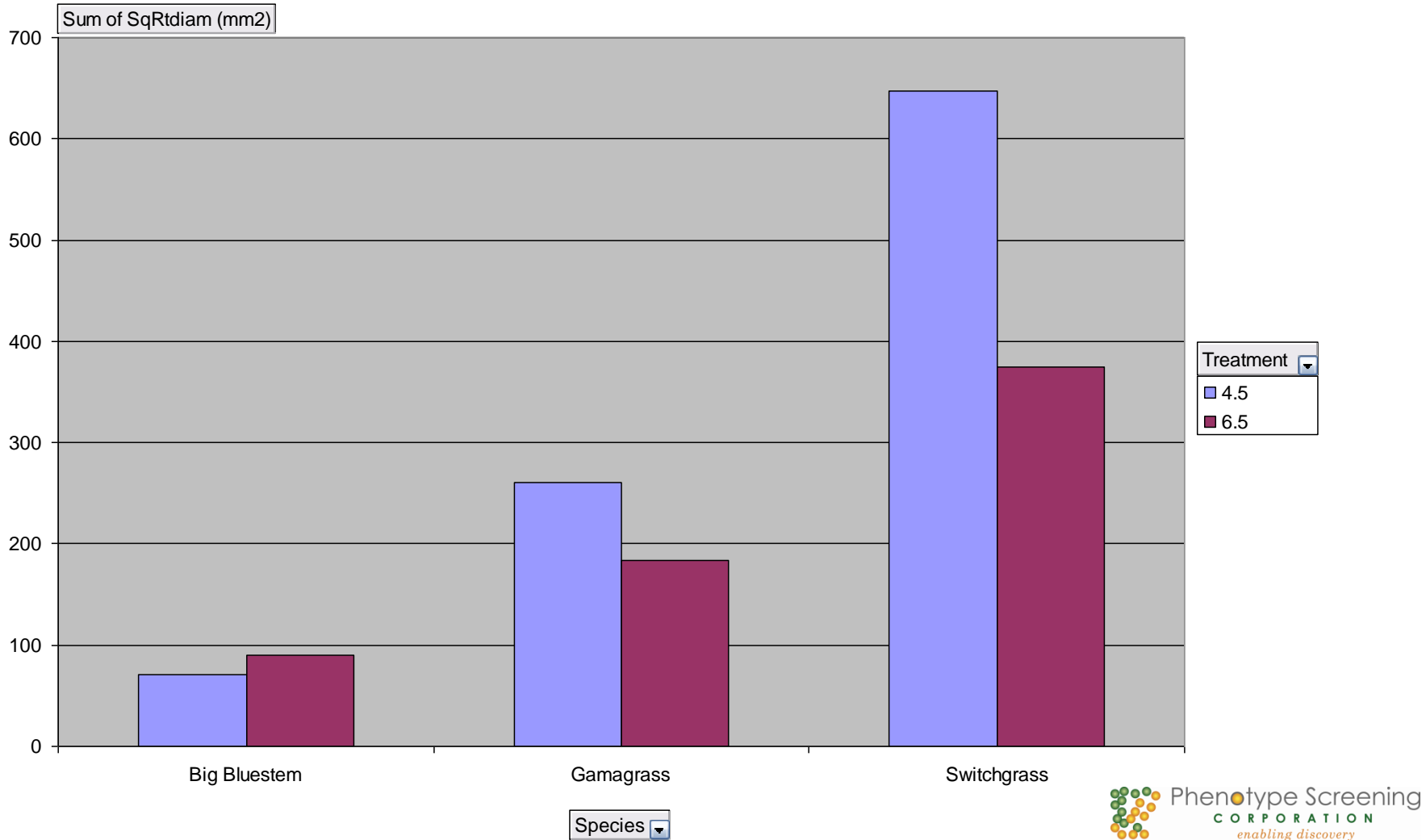
Average “Total-Root-Length”



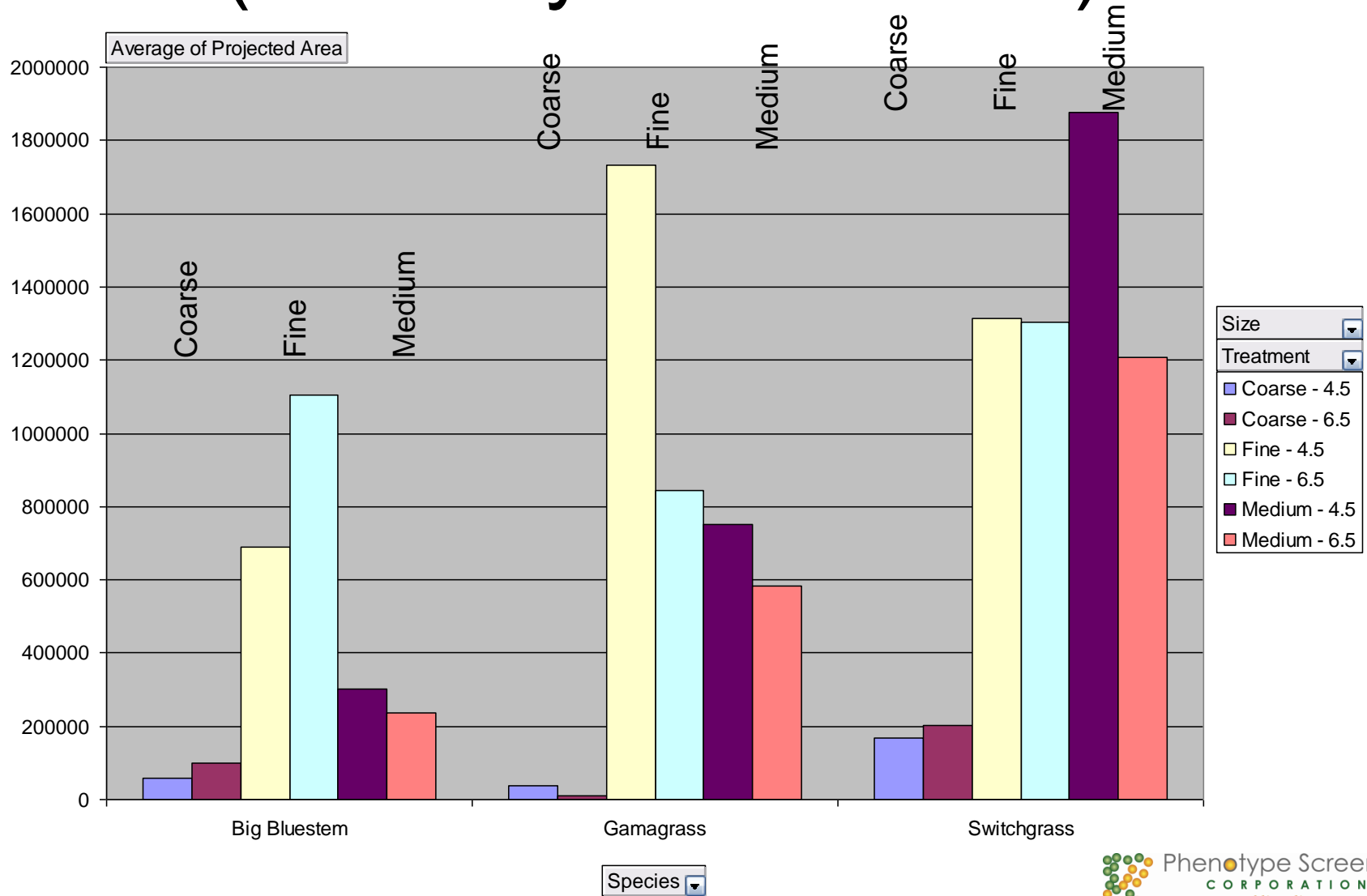
Average “Total Root Length Density”



Approximate Root Mass Extracted from X-ray Images (arbitrary units)

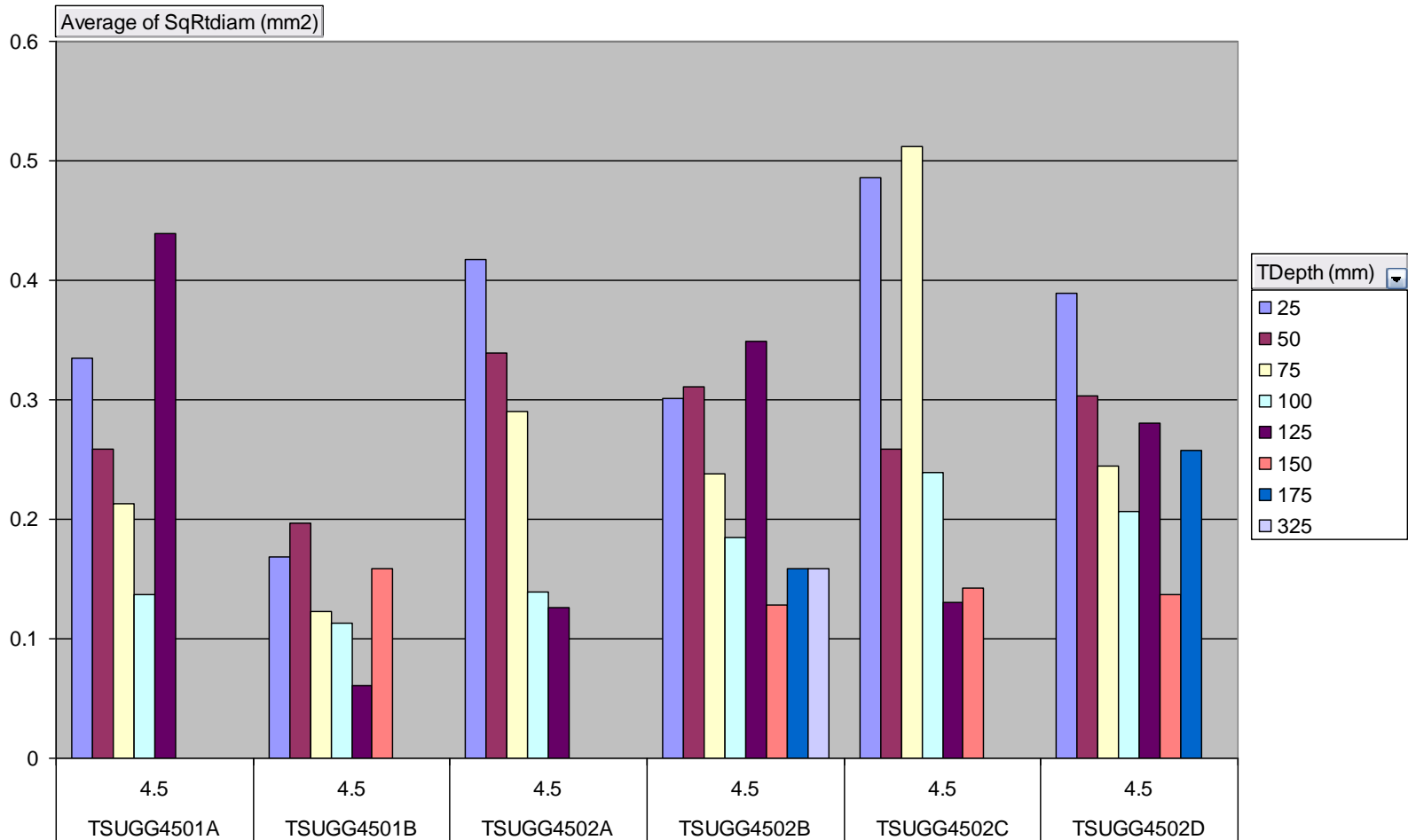


Silhouette Area of Root System ("Root System Extent")



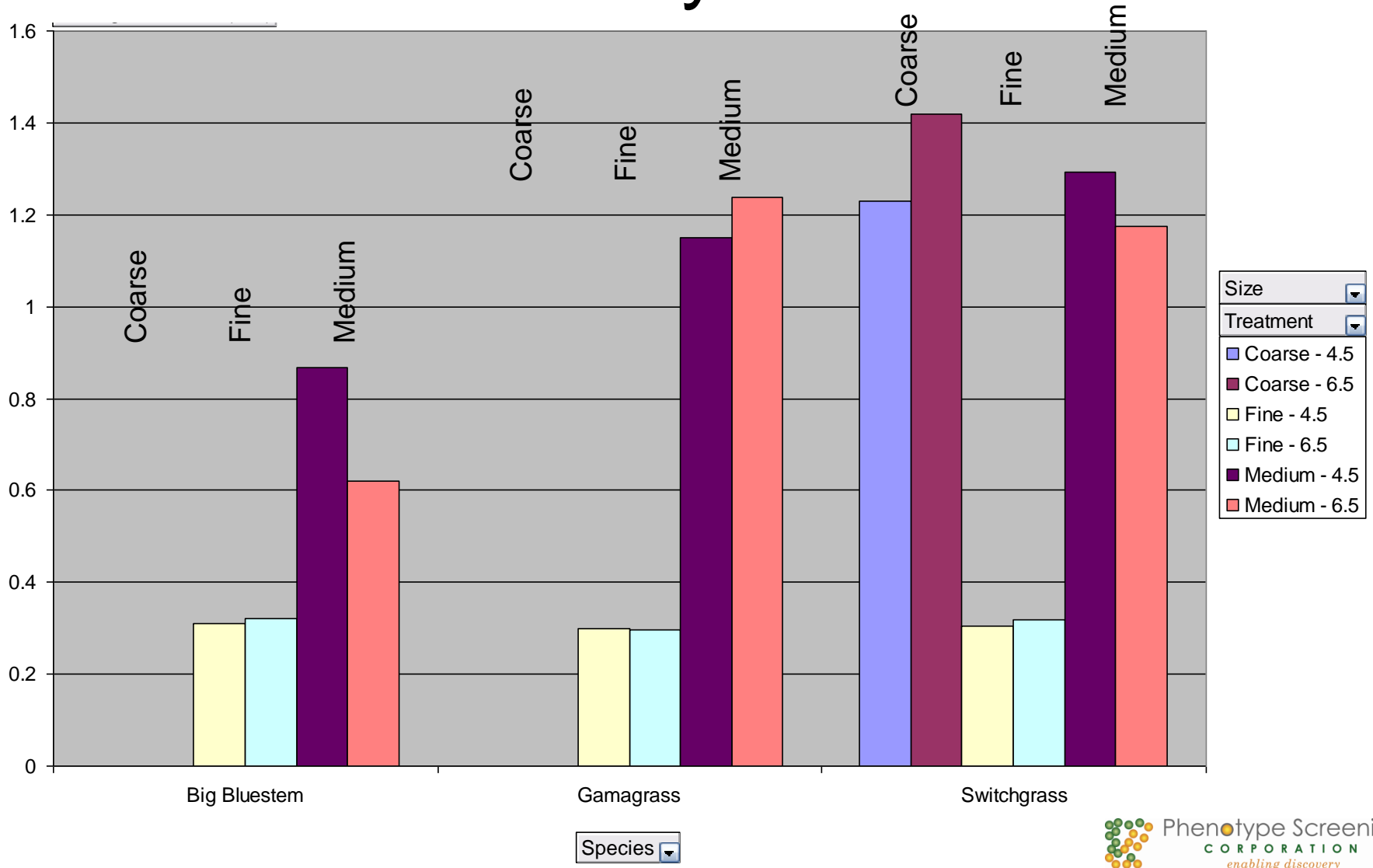
Approximate Root Mass Distribution by Individual Gamagrass Plant

Species Gamagrass

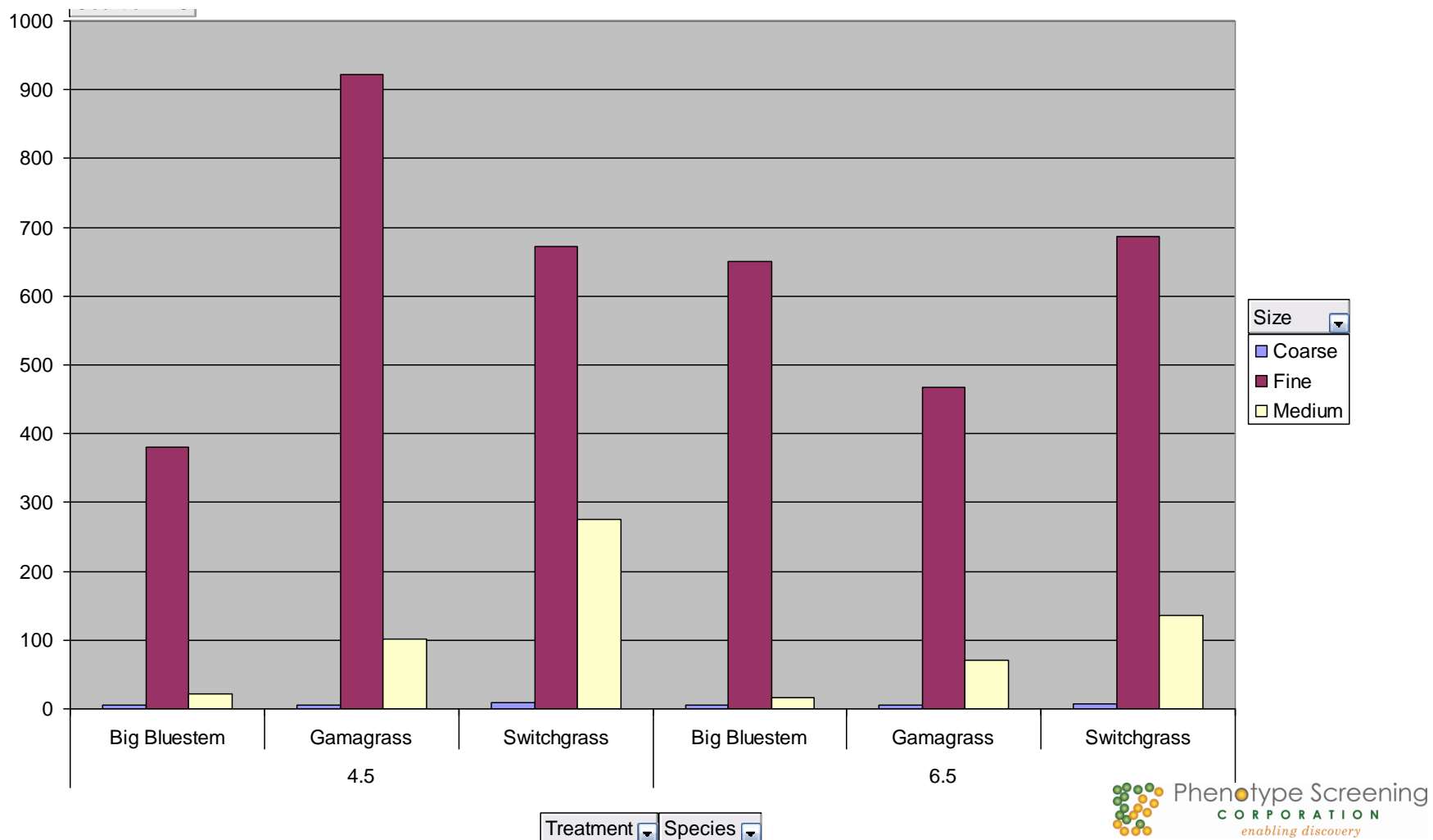


Plant ID Treatment

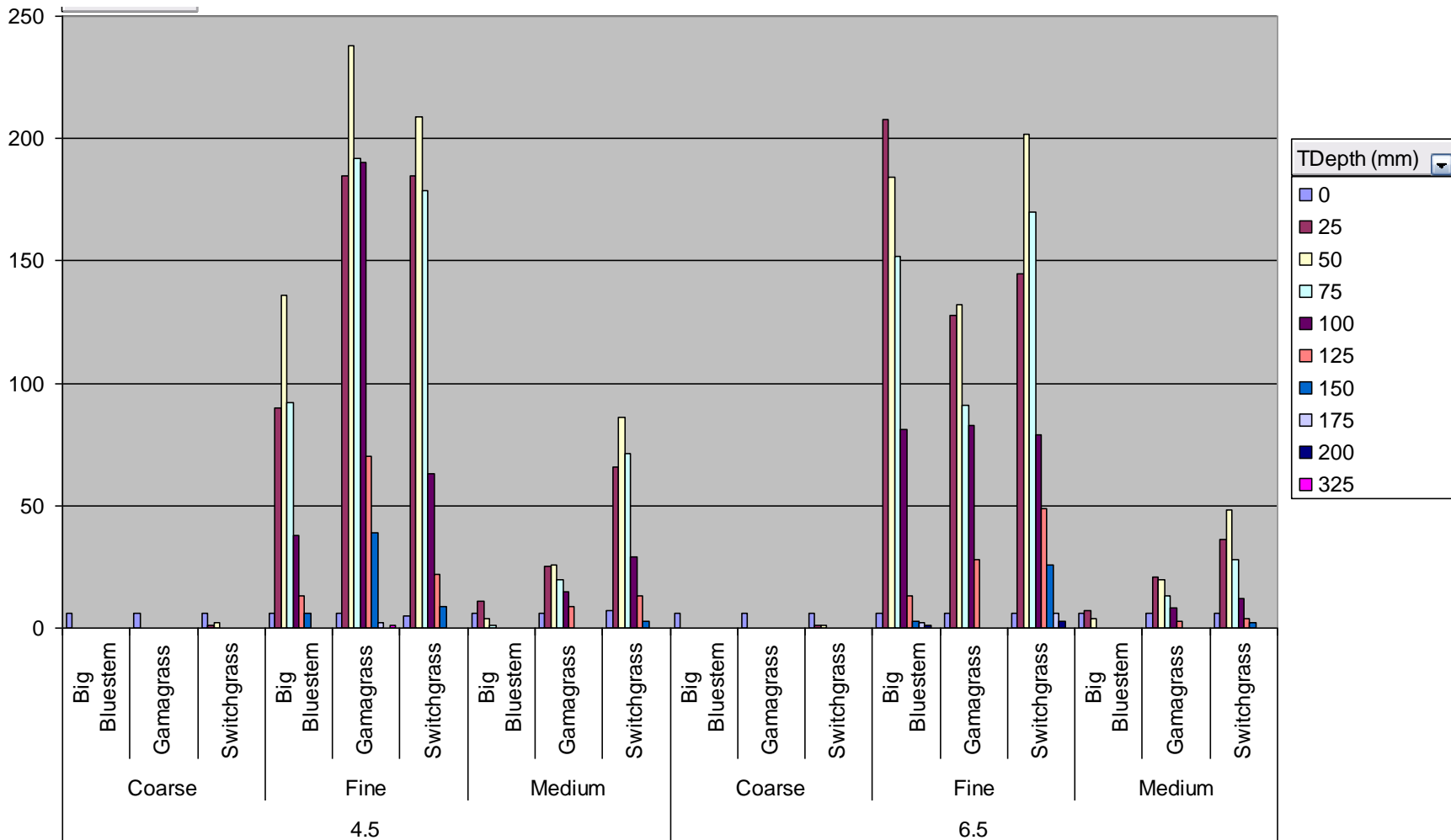
Average Root Diameter by Size-Class and by Treatment



Number of Root Crossings Over All Transect Depths by Root-Size-Class

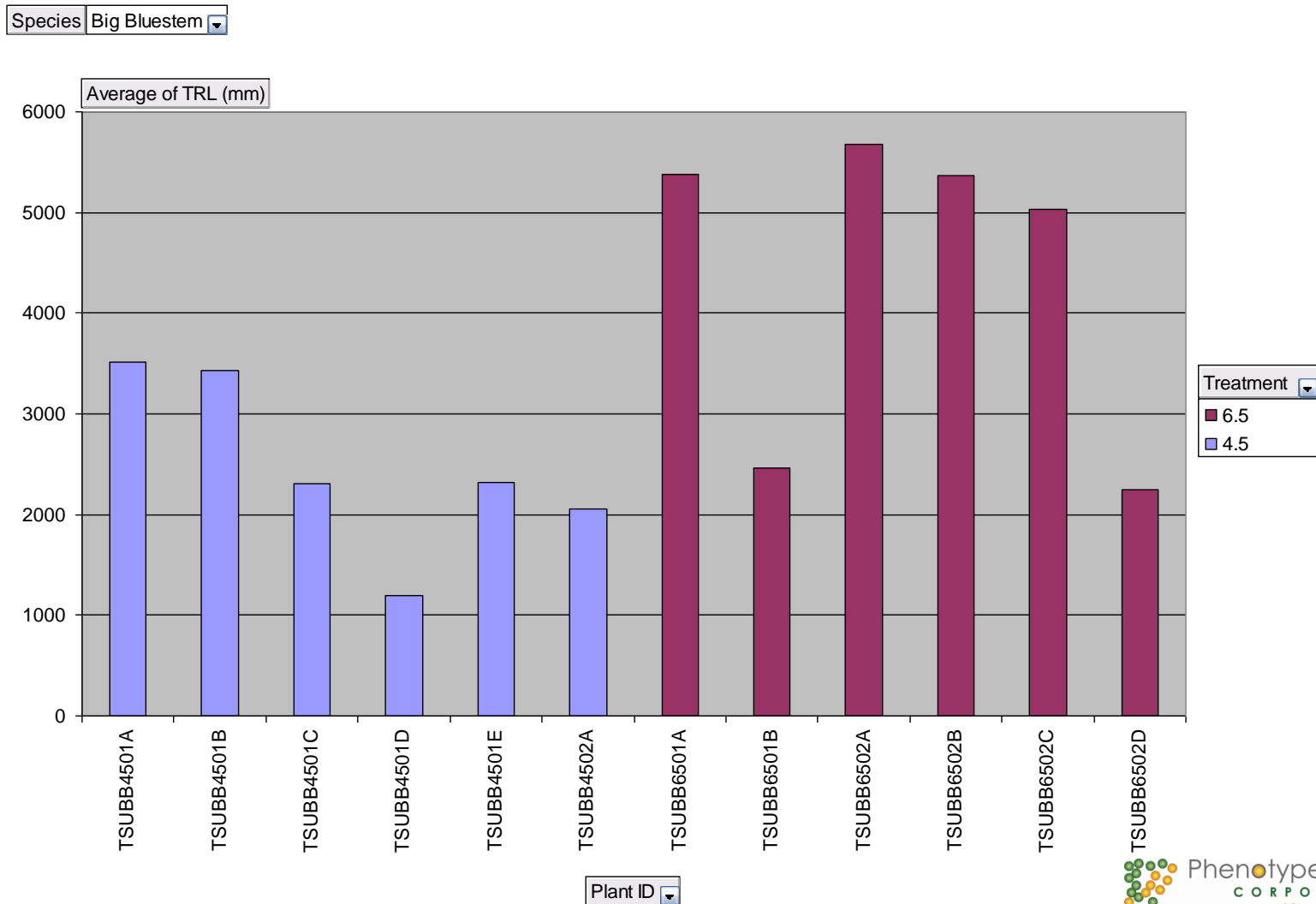


Number of Root Crossings at Measured Transect Depths



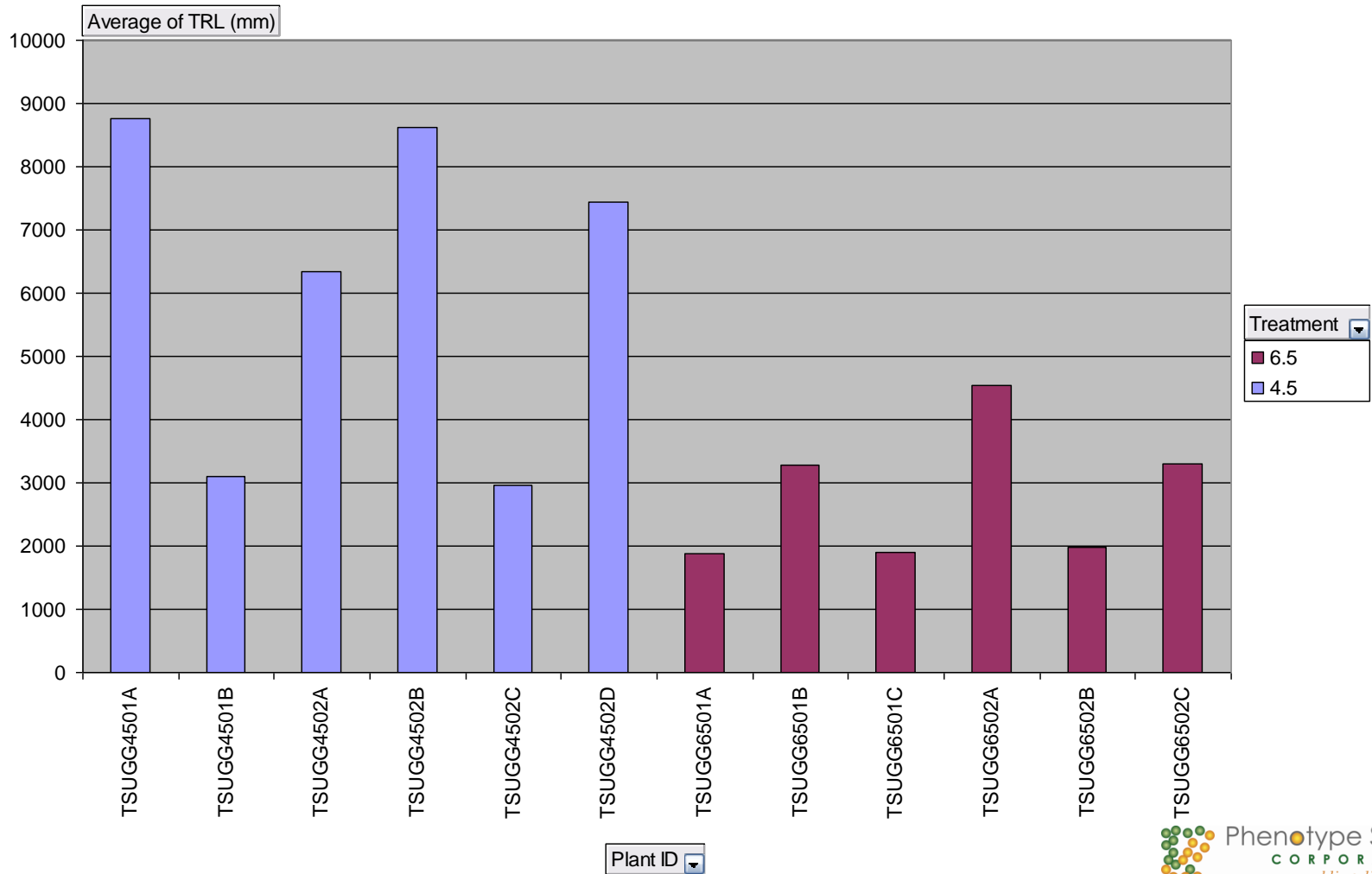
Treatment Size Species

TRL by Individual Big Bluestem Plant



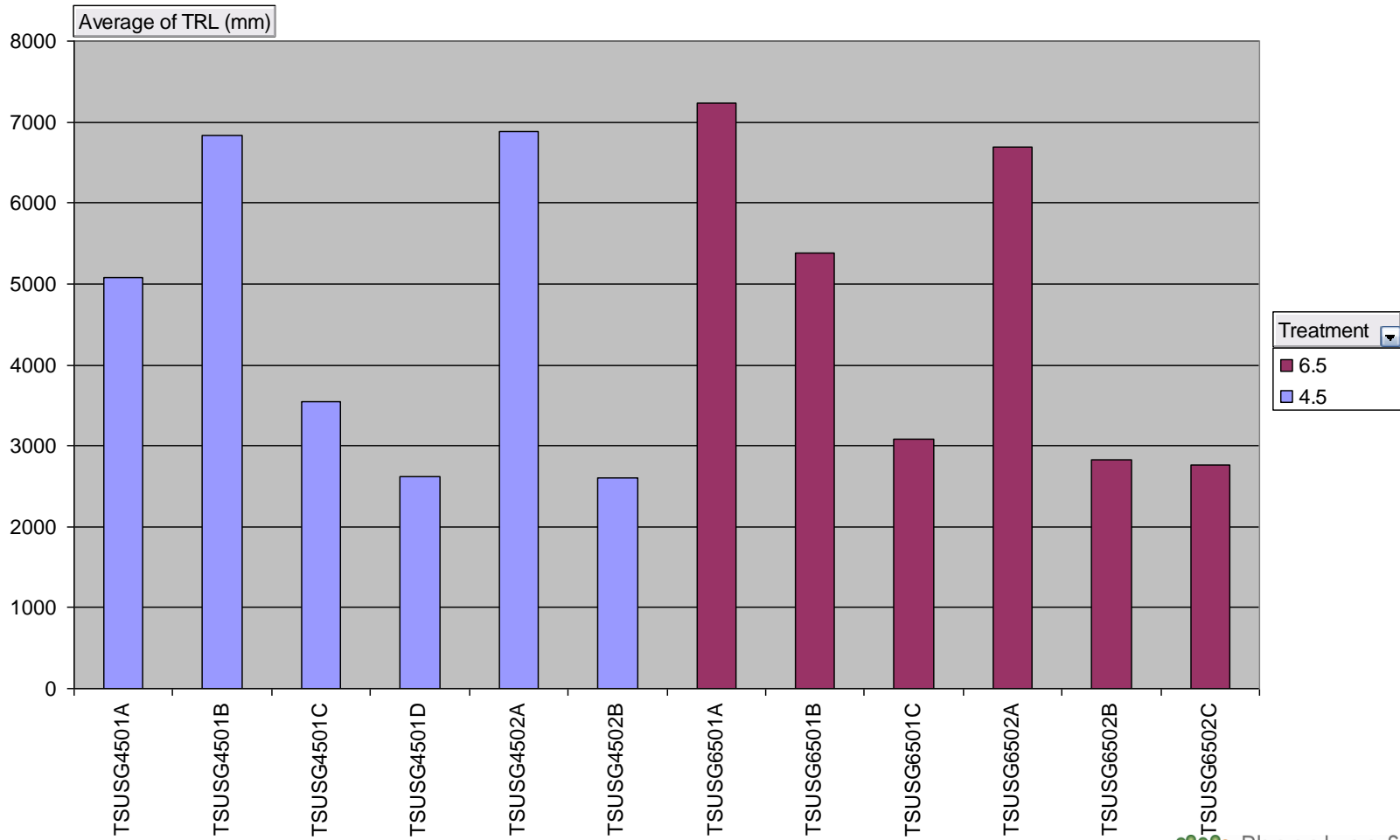
TRL by Individual Gamagrass Plant

Species Gamagrass



TRL by Individual Switchgrass Plant

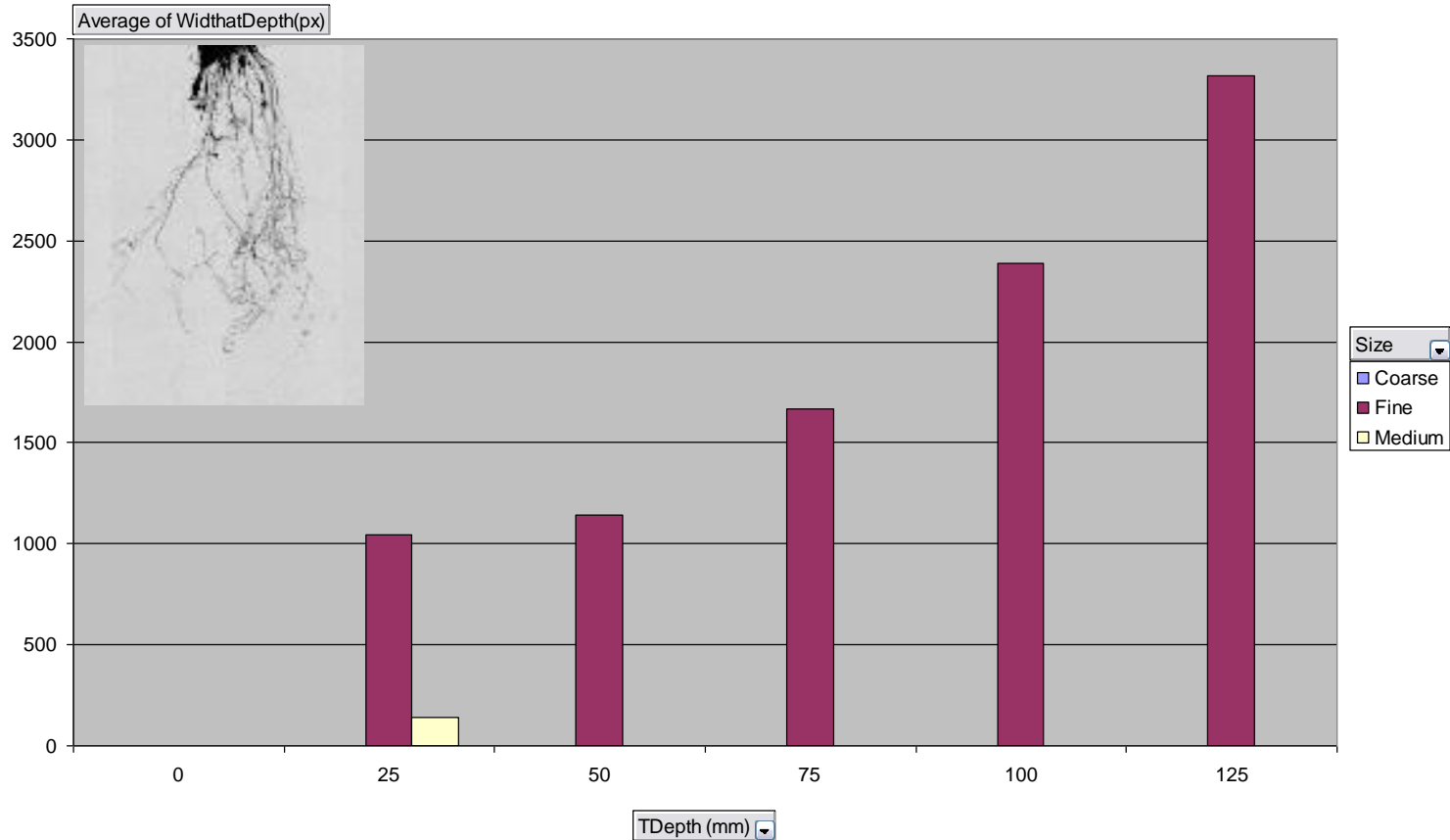
Species Switchgrass



Plant ID

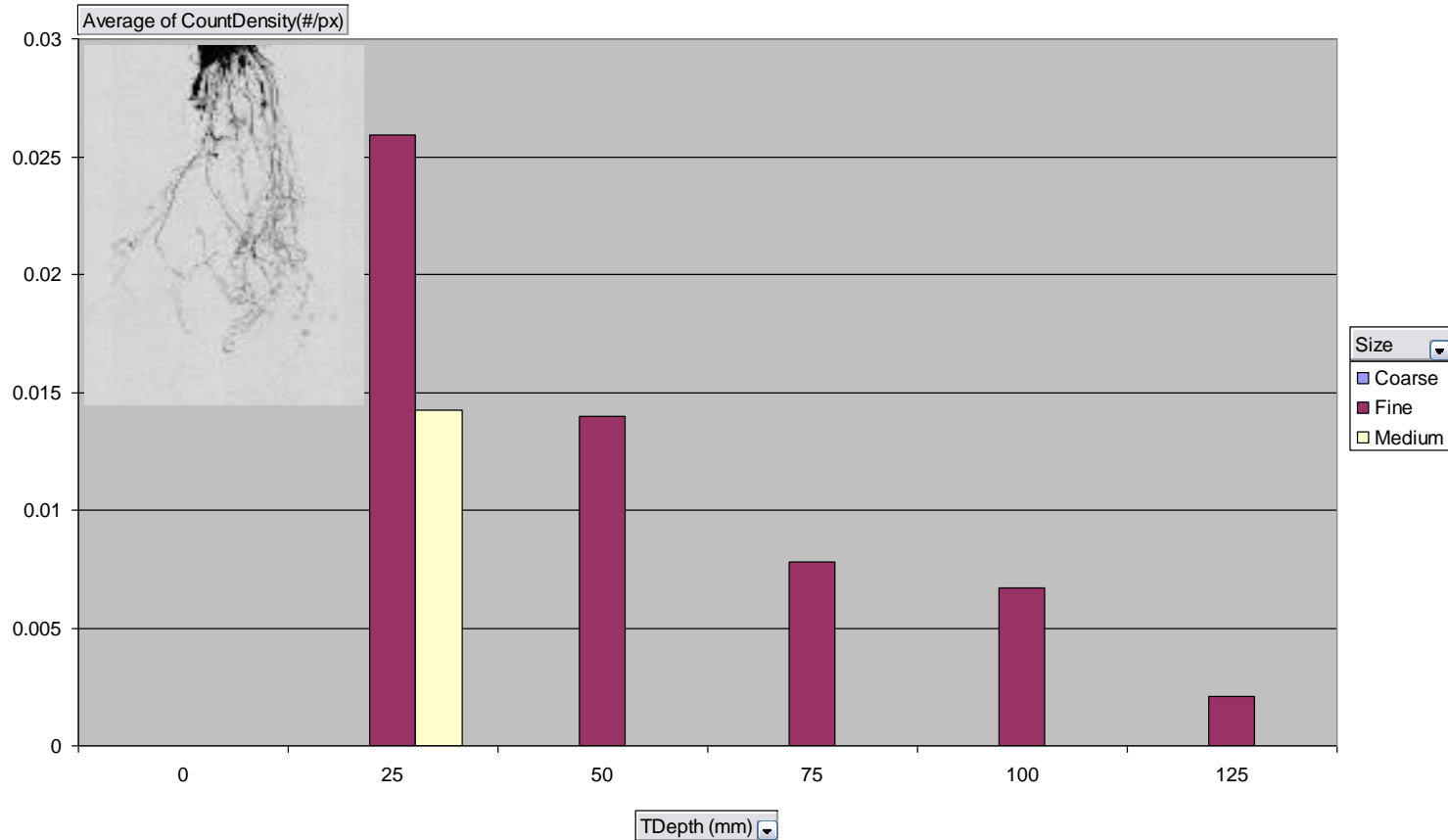
Root System Width at Increasing Depths of TSubBB4501A

Plant ID TSubBB4501A Species Big Bluestem



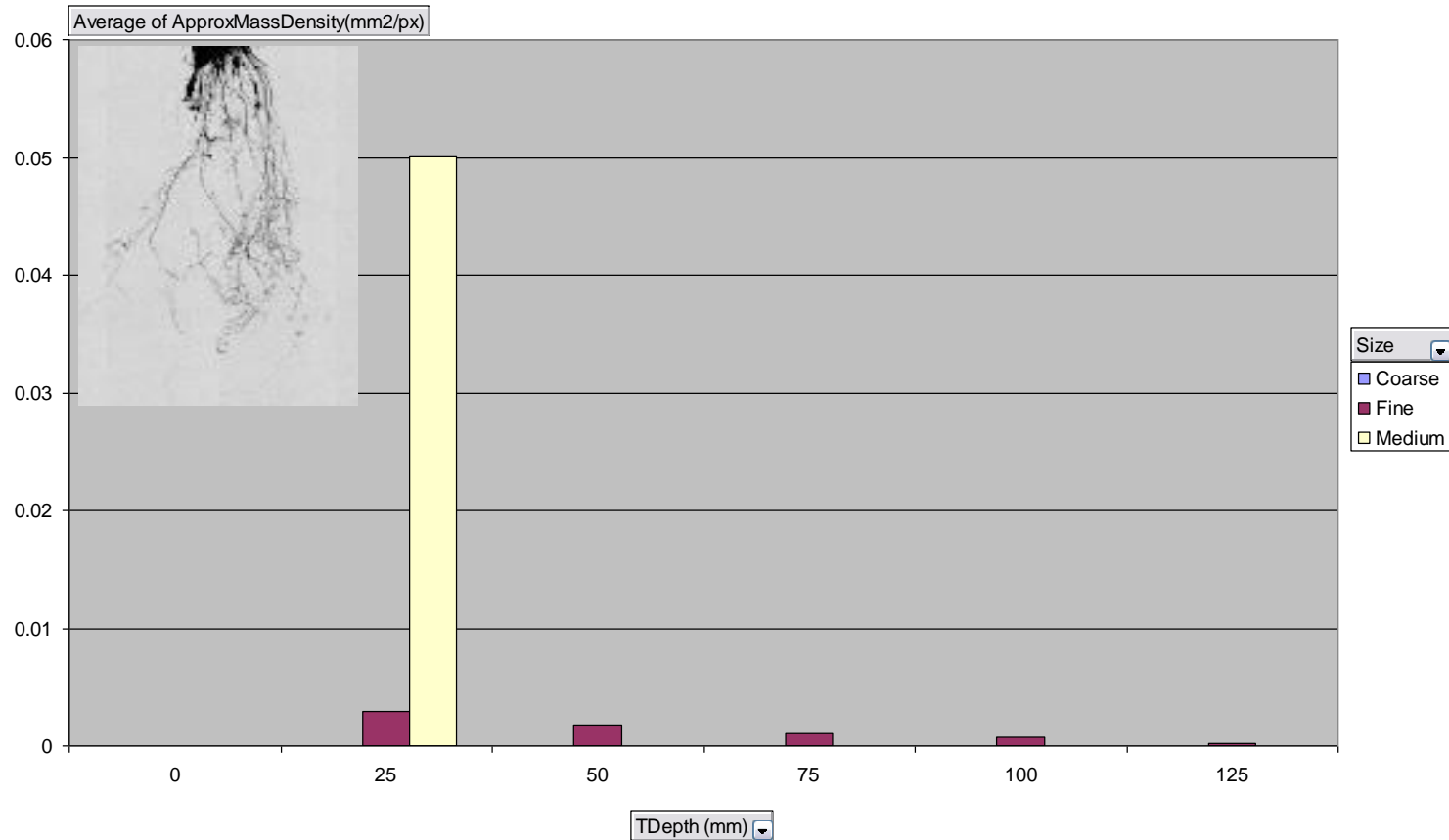
Number of Root Crossings per Root System Width (Count Density) at Increasing Depths of TSubBB4501A

Plant ID TSubBB4501A Species Big Bluestem



Approximate Root Mass Density Distribution at Increasing Depths of TSubB4501A

Plant ID TSubB4501A Species Big Bluestem

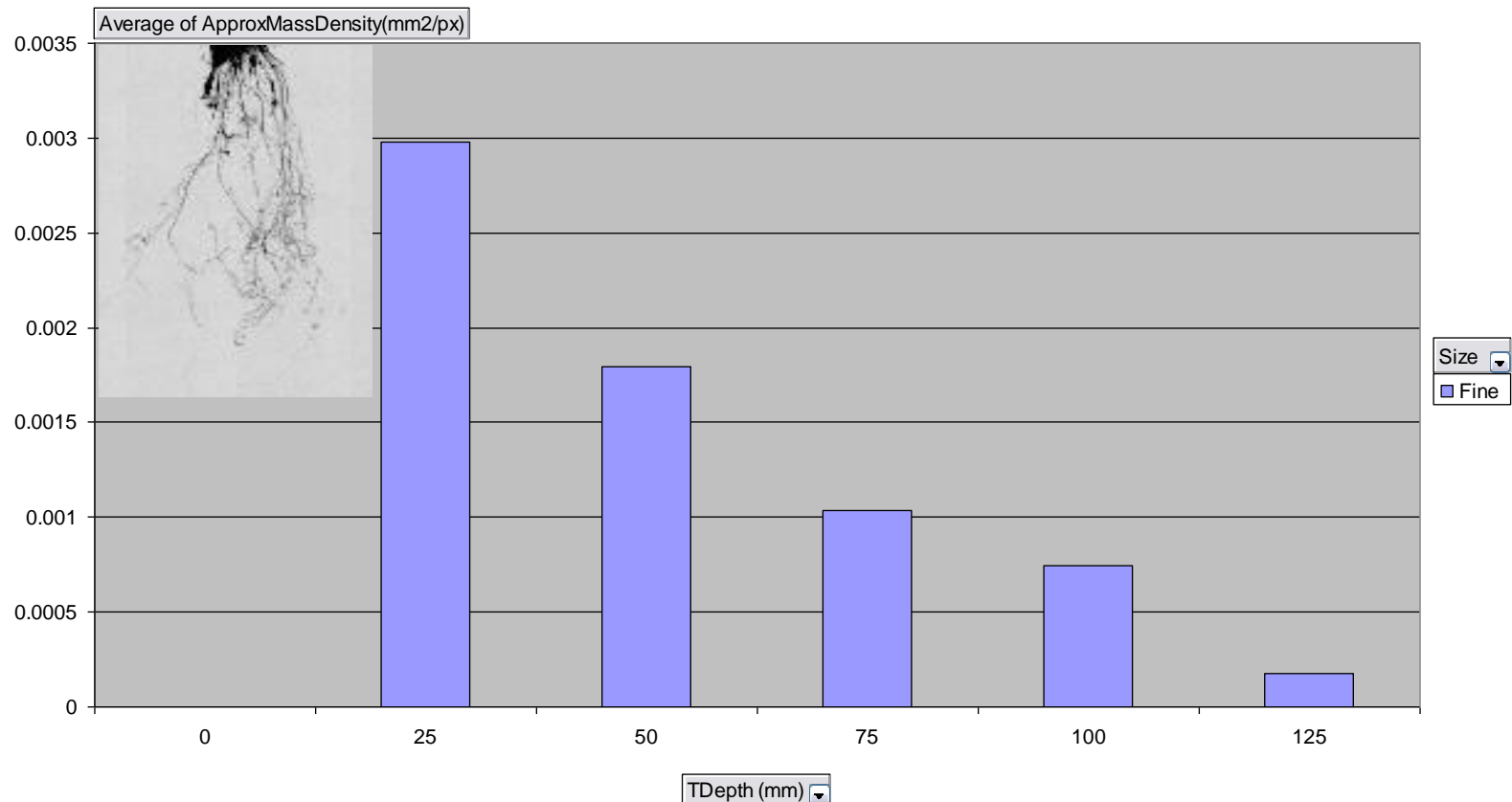


Approximate Root Mass Density Distribution at Increasing Depths of

TSUBB4501A

Plant ID TSUBB4501A Species Big Bluestem

Fine Roots Only!!!



Conclusions

- Detailed, clear, high-resolution images are possible with pot-grown or field harvested washed root systems.
- Global descriptors of RSA can be automatically extracted from X-ray Images.
- Global descriptors of RSA can be determined independently for each root size class.
- RSA distribution as a function of root depth can also be derived and gives unique insight into root system morphology.
- Image analysis can differentiate root system growth between species and between treatments within and between species.